



Colliers

For Lease

**Sebastian Findlay, SIOR**

Principal  
+1 912 483 6160  
sebastian.findlay@colliers.com

**Danny Chase, SIOR**

Principal  
+1 912 662 8012  
danny.chase@colliers.com



Colliers

Colliers International Savannah  
545 E. York Street  
Savannah, GA 31401

Main: +1 912 233 7111  
colliers.com/savannah

# River Road Logistics Center

1085 Old River Road | Bloomingdale, GA 31302

±393,680 SF Rail-Served Warehouse

- New Class A warehouse with Genessee & Wyoming dual rail service
- Direct access to Interstate-16 and 10.5 miles from Interstate-95
- Expansive trailer parking, total of 141 spaces
- ±19 miles to the Georgia Ports Authority container terminal
- **Estimated Delivery December 2022**

Accelerating success.



# Property Profile



## Numbers at a Glance

393,680 sf  
Building Size

55 dock  
Doors

2 drive-in  
Doors

36 foot  
Clear Height

141 trailer  
Parking

87 car  
Parking

185'  
Truck Court

ESFR  
Sprinklers

Tiltwall  
Construction

5 rail  
Doors

19 miles  
To Port of Savannah

Q4 2022  
Building Delivery



# Site Plan



Genessee & Wyoming Rail Line (CSX & NS)

5 Rail Doors

**±393,680 SF**  
**Warehouse**

55 Dock Doors | 2 Drive-in Doors

72 Trailer Parking Spaces

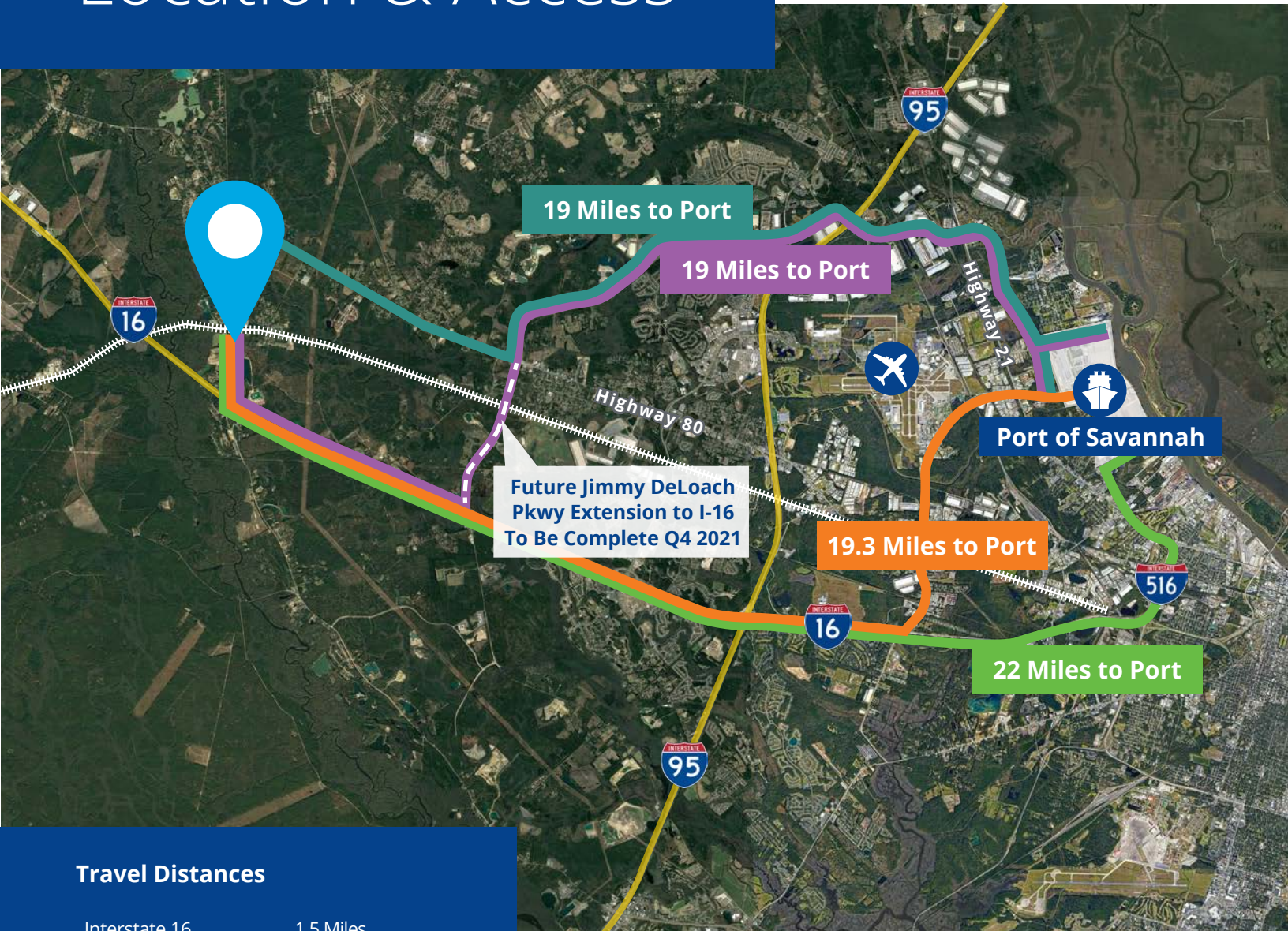
Additional 69 Trailer Parking Spaces

OLD RIVER ROAD

BAY ROAD



# Location & Access



## Travel Distances

Interstate 16 1.5 Miles

Interstate 95 10.5 Miles

Savannah Airport 17.4 Miles

Port of Savannah 19 Miles

Charleston, SC 120 Miles

Jacksonville, FL 140 Miles

Atlanta, GA 230 Miles

## Legend



River Road Logistics Center



Port of Savannah



Routes to Port



Savannah Hilton Head International Airport



Genessee & Wyoming Rail Line (CSX & NS)



Interstates





Photo courtesy of Georgia Ports Authority

River Road Logistics Center | For Lease

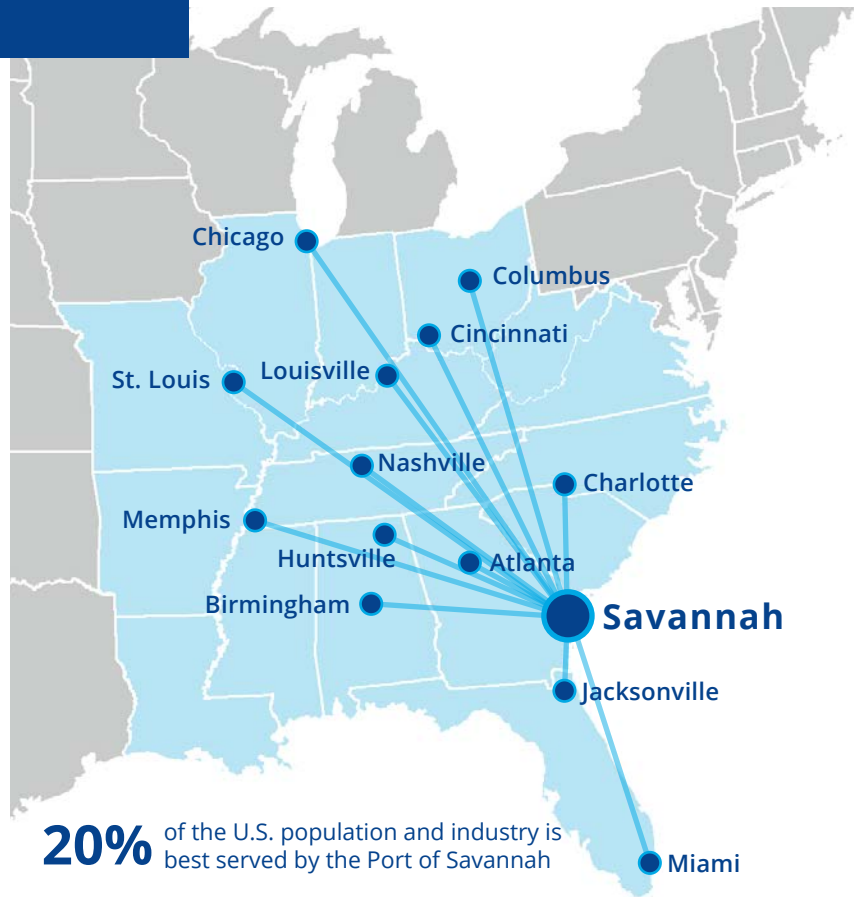
# Port of Savannah

**Fastest growing port in the nation over the past 10 years.**

As the Georgia Ports Authority continues to see unprecedented volume, demand for industrial space in the Savannah market remains strong. In late March of 2021, the Port approved a \$205 million capital improvement package to expand their capacity enabling them to keep a 20% cushion between volume and capacity. The GPA handled 495,750 TEUs in November of 2021, a 6.7% increase over the previous year.

## Georgia Central Railway

The Georgia Central Railway is owned by Rail Link, a subsidiary of Genesee & Wyoming Inc, (G&W). It is one of thirteen G&W railroads serving the state of Georgia, the Georgia Central Railway runs 211 miles from Macon to Savannah with connections to CSX and Norfolk Southern, as well as with G&W's Heart of Georgia Railroad.



**20%** of the U.S. population and industry is best served by the Port of Savannah

**44%** within easy reach of inland connectivity and infrastructure

## Contact

**Sebastian Findlay, SIOR**  
Principal  
+1 912 483 6160  
sebastian.findlay@colliers.com

**Danny Chase, SIOR**  
Principal  
+1 912 662 8012  
danny.chase@colliers.com

